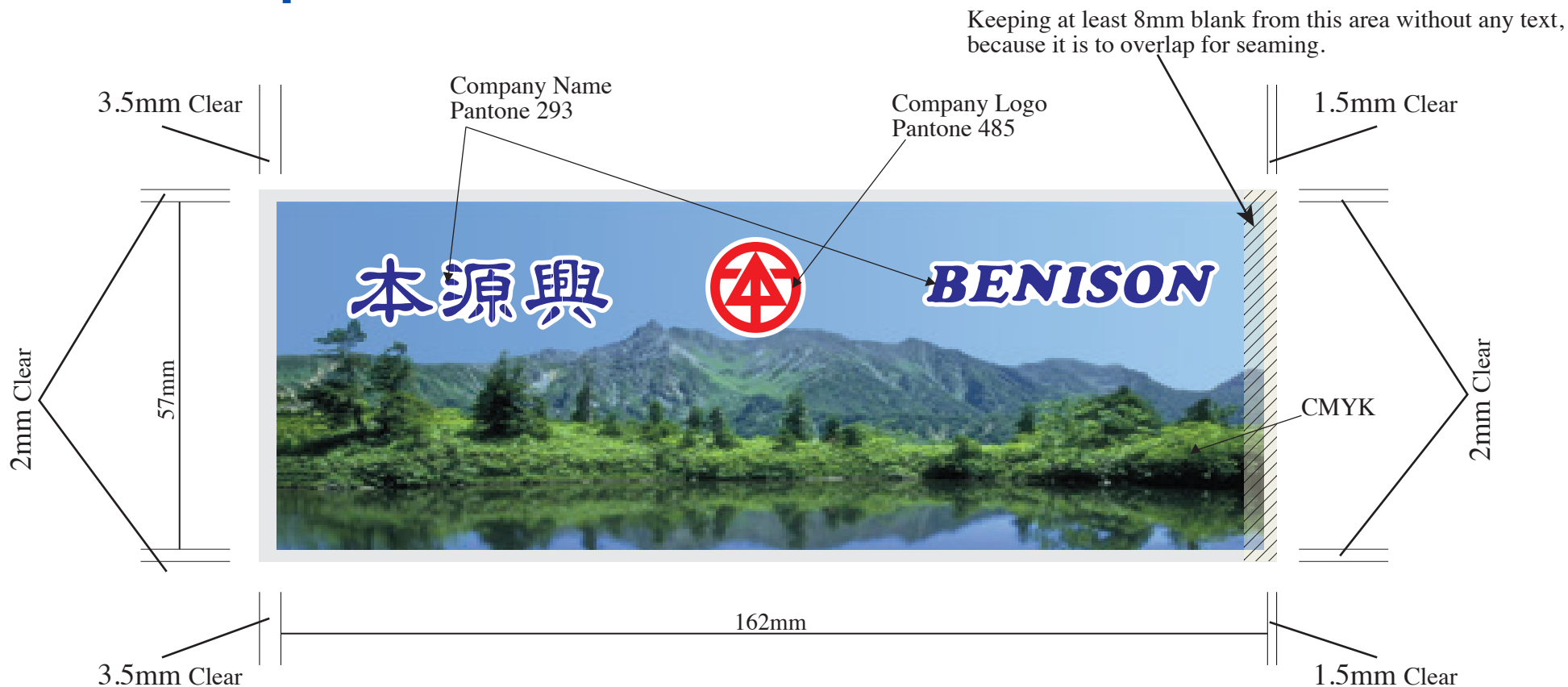
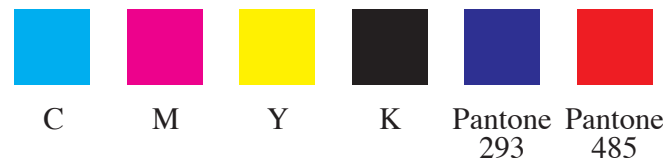


Example : Labelling Special colours on proof



Job Size: 57mmX162mm

Printing Colours: CMYK, Pantone 293, Pantone 485



- ※ 1. Injet proofs are for colour reference only, Don't not use it to make the standard of the printing.
- 2. The color benchmark will be required if user needs to contrast color of print.
(The exact label of previous order can be one of options for benchmark)
- 3. Printing colours will be matched according which image to CMYK and spot color to PANTONE standards.
- 4. Please note that Colours will also vary when printing on different substrates.

RECOMMENDATION OF FONT FORMAT

We recommend following format of font to print the text on label(Gothic or Gothic Round)

黑體 圓體

Arial Arial

The font format of MingKiu is not recommended.

新細明體

Arial

RECOMMENDATION OF REVERSE TYPE(WHITE ON BLACK)

All texts on artwork must be single color whatever it is reverse type or straight print.

Even after brushing, bacteria constantly attacks the mouth. This can lead to tooth decay and bad breath. Astring-O-sol scientifically protects the mouth by offering a Tri-Defense formula that helps strengthen teeth, protects the gums and helps clean the tongue leaving you with a healthy mouth.

DIRECTIONS: ALWAYS FOLLOW THE LABEL. Use twice daily. Rinse with 10ml for 1 minute then spit out. Do not rinse with water. Do not swallow. Do not drink from the bottle. Not to be given to children under 6 years of age.

Reverse type text:

The background of reverse type text should be single color.

Reverse type text:

If background of reverse type is printed by CMYK, the must be printed with outline to prevent sevieation from colors registration.



CARMELIZED
BALSAMIC
DRESSING